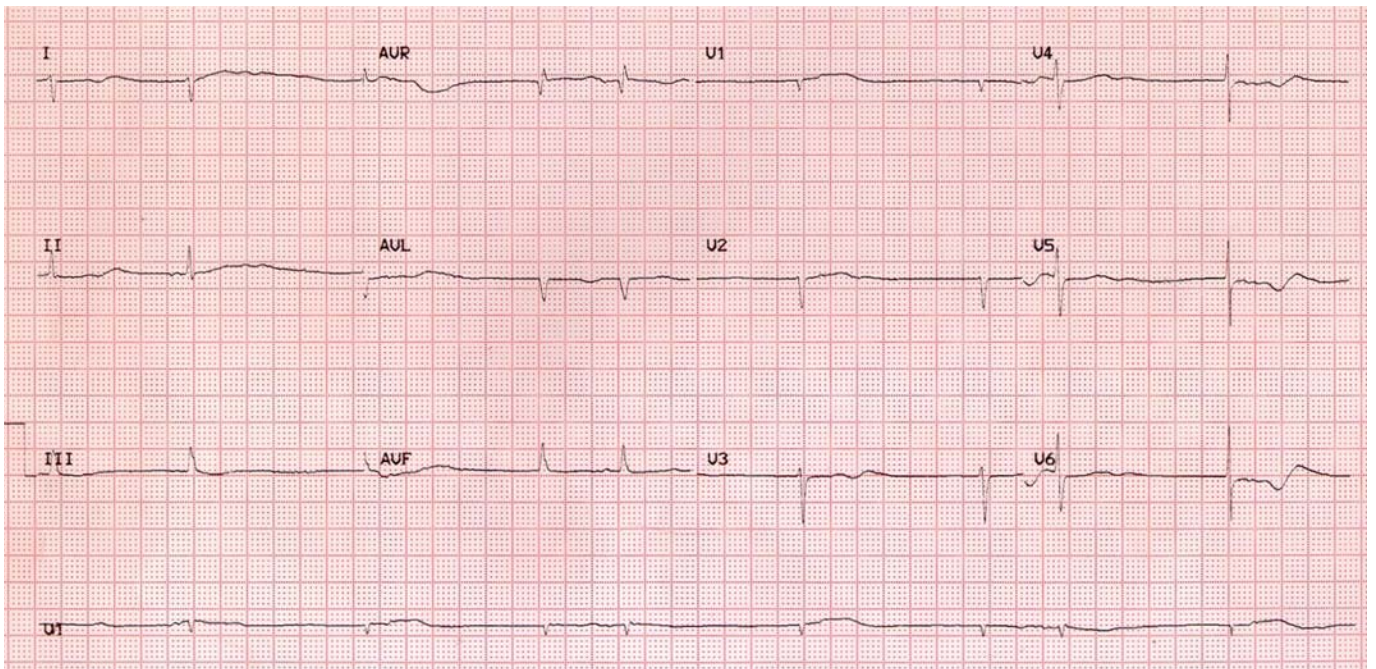


ECG Quiz 6



A Okreglicki

Cardiac Clinic University
of Cape Town / Groote Schuur Hospital
Cardiac Arrhythmia Society of Southern Africa (CASSA)



An 86-year-old woman with a background of diabetes mellitus, hypertension, pernicious anaemia and mild dementia presented with deteriorating effort tolerance (NYHA Class III), orthopnoea and occasional dizziness. She denied syncope. Cardiovascular medications include enalapril, aspirin and amlodipine. An ECG was done. Does she need a pacemaker?

QUESTION: Which ONE of the following ECG diagnoses is correct?

- | | |
|--|--|
| (a) Sinus bradycardia with atrial ectopics | |
| (b) Complete heart (AV) block with ventricular escape beats | |
| (c) Atrial fibrillation with conducted slow ventricular rate | |
| (d) Sinus arrest with dual escape rhythms | |
| (e) Normal heart rate with ectopics just recorded at wrong speed | |

Please analyze the ECG carefully and commit yourself to an answer before checking the explanation.

ANSWER on page 42