

Figure 1. Computed tomography of the kidneys, with contrast, revealed no enhancement of the renal cortices, indicating absent intra-renal blood flow.

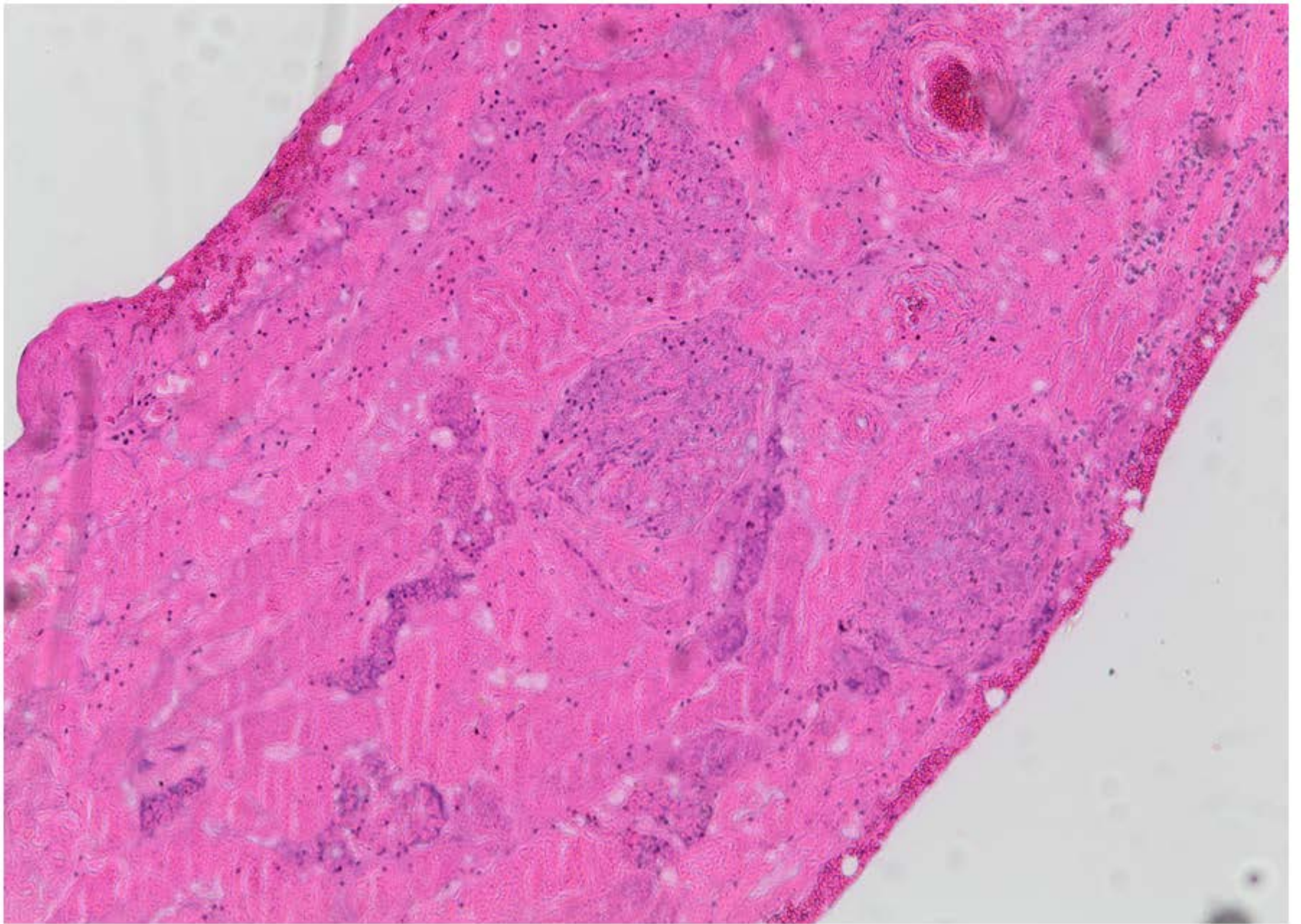


Figure 2A. Kidney biopsy displaying cortical necrosis characterized by almost complete loss of nuclear staining. The outlines of three glomeruli are visible in the centre of the picture.

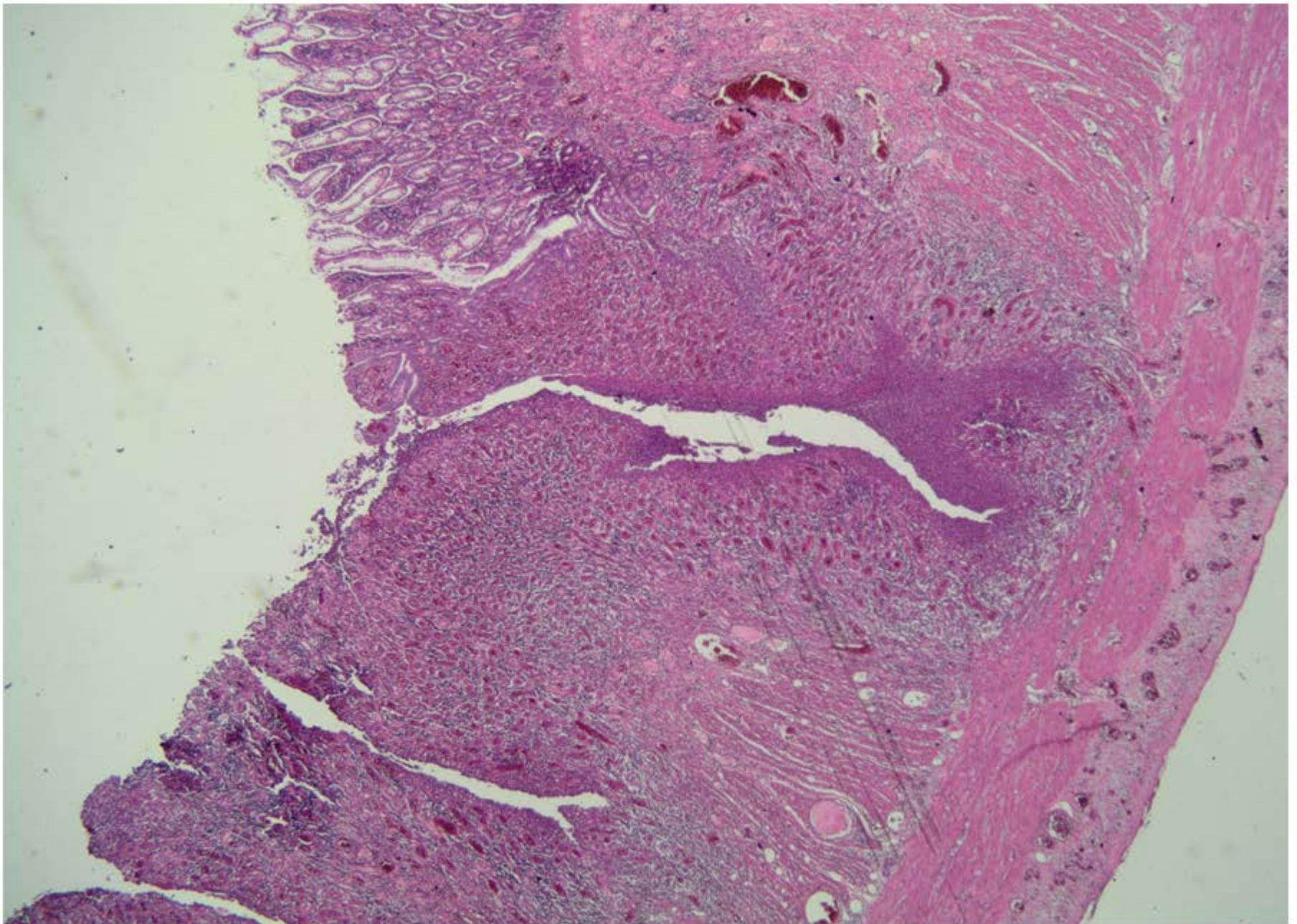


Figure 2B. Deep fissures in the terminal ileum in keeping with Crohn's disease.