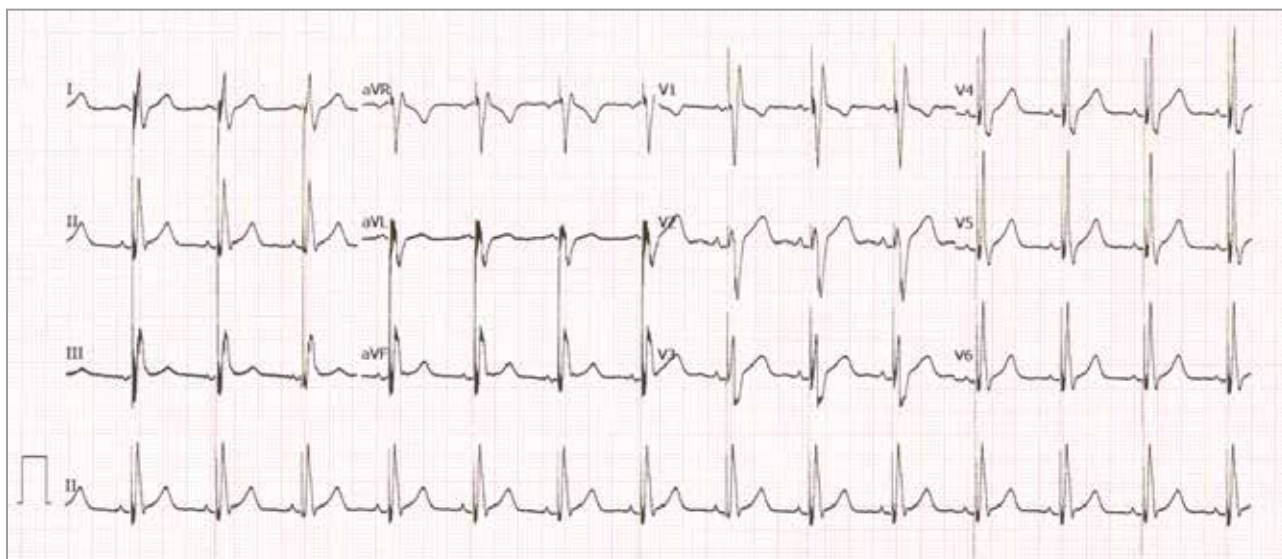


Rob Scott Millar ID: <https://orcid.org/0000-0002-5608-0623>

Ashley Chin ID: <https://orcid.org/0000-0001-6930-3673>

DOI: <https://doi.org/10.24170/22-1-7221>

Creative Commons License - CC BY-NC-ND 4.0



A 32-year-old man received a pacemaker for idiopathic complete heart block (presenting ECG showed a junctional escape with left bundle branch block at 42bpm). He now presents to the device clinic for a routine visit 6 weeks post implant.

QUESTION: Which of the following diagnoses are compatible with this ECG?

- a. Biventricular pacing (cardiac resynchronisation therapy)
- b. Conduction system pacing – His bundle pacing
- c. Conduction system pacing – left bundle branch pacing
- d. Epicardial left ventricular / coronary sinus pacing
- e. Right ventricular outflow tract pacing

Please analyse the ECG carefully and commit yourself to an answer before checking the explanation.

ANSWER on page 67