

ECG Quiz 9

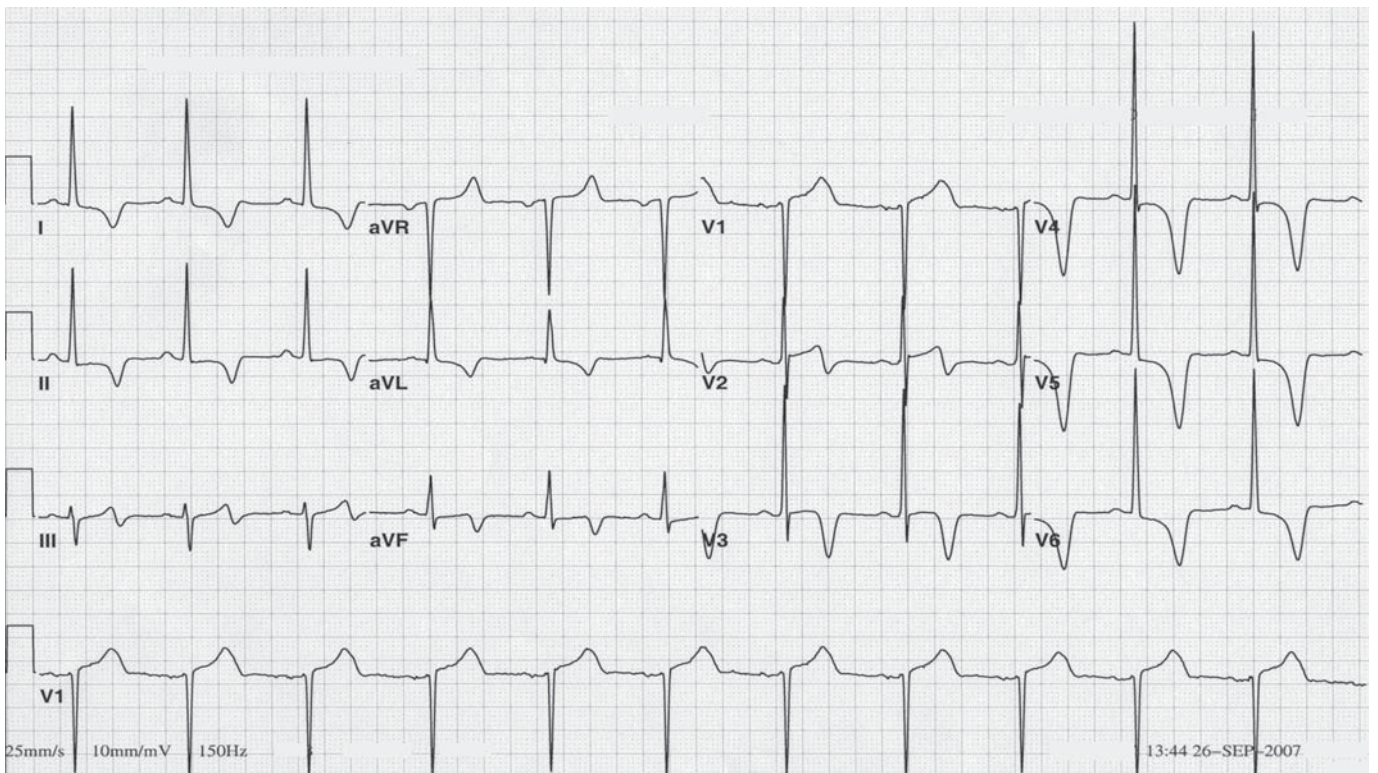


CASSA
CARDIAC ARRHYTHMIA SOCIETY
OF SOUTHERN AFRICA
A SPECIAL INTEREST GROUP OF SA HEART ASSOCIATION

A Okreglicki

Cardiac Clinic University of Cape Town / Groote Schuur Hospital

Cardiac Arrhythmia Society of Southern Africa (CASSA)



This is an ECG of a 50-year-old man. He was referred for assessment because of dyspnoea, chest pain, possibly effort related, and examination findings of BP 160/95 and a systolic murmur. An echocardiogram was done.

QUESTION: Which ONE of the following is the most likely echocardiographic finding?

- (a) Aortic stenosis with left ventricular hypertrophy
- (b) Mildly dilated LV with severe symmetrical hypertrophy
- (c) Asymmetrical septal hypertrophy with systolic anterior mitral leaflet movement and regurgitation
- (d) Marked apical LV hypertrophy with systolic cavity obliteration
- (e) Severe mitral regurgitation.

Please analyze the ECG carefully and commit yourself to an answer before checking the explanation.

ANSWER on page 58